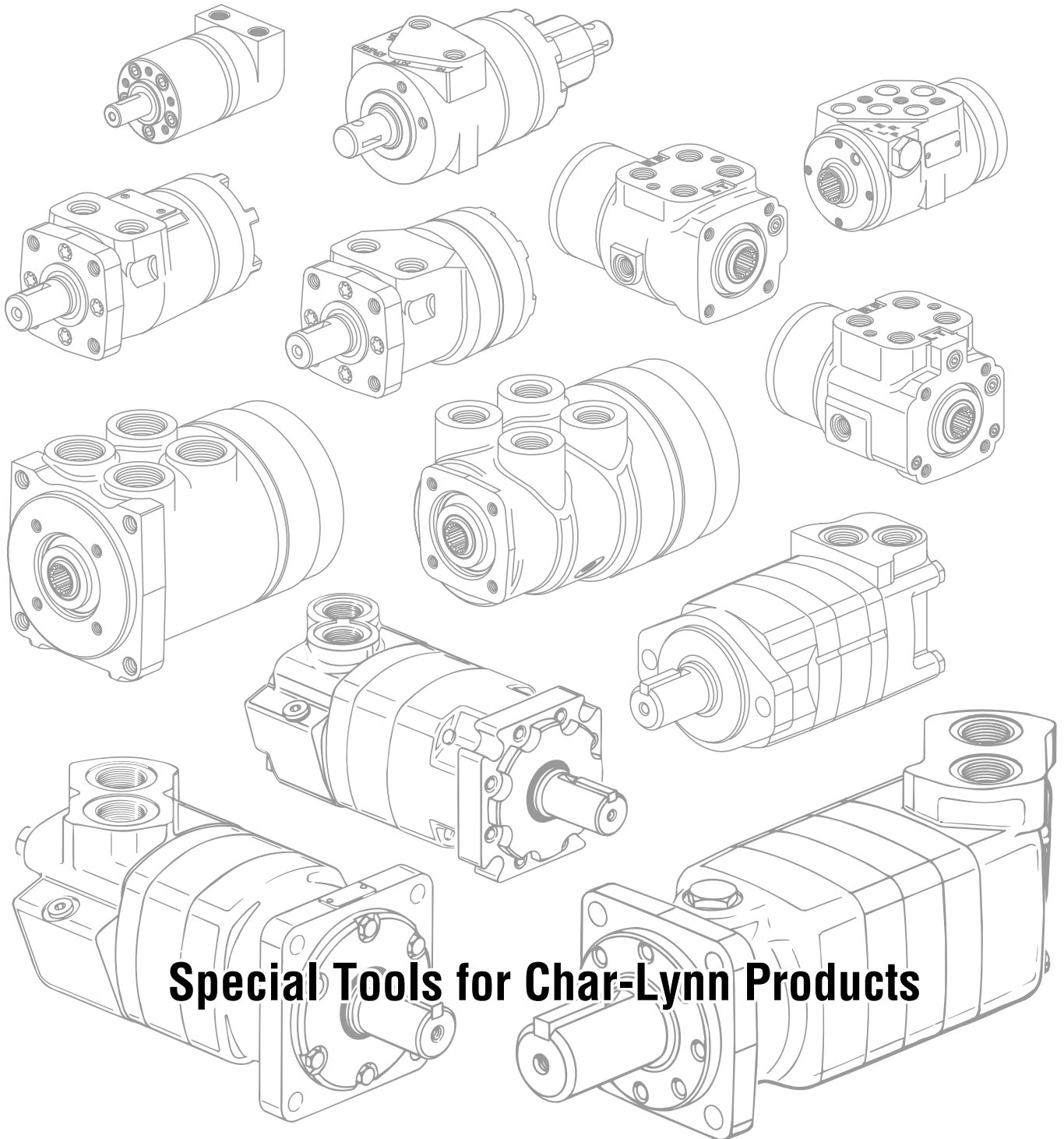


Char-Lynn®

Product Information

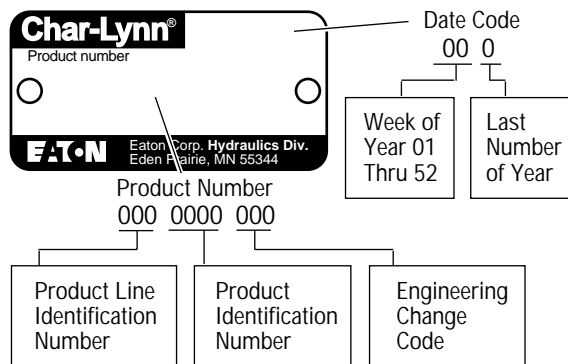
June, 1996



Special Tools for Char-Lynn Products

Introduction

Eaton Corporation, Hydraulics Division has made available special tools to aid the user in the disassembly and reassembly of Eaton Char-Lynn products. The use of these tools will prevent possible damage to seals and etc. during reassembly of the Char-Lynn products. These special tools are listed first by part number and then by tool description on page 3 of this document. Pages 4, 5, and 6 are to be used to show where each of these special tools may be used by product series and engineering change code. This information may be found on the product information tag located on each and every Char-Lynn product. See Sample tag below.



Special Tools for Char-Lynn Products

Part Number	Special Tool Description
5422-000	5/16 in. -12 Point Socket
600057-000	Spring Installation Tool
600304-000	Shaft Seal Bullet
600336-000	Spring Installation Tool
600421-000	Shaft Face Seal Installation Tool
600463-000	Shaft Seal Bullet
600464-000	Shaft Seal Bullet
600465-000	Shaft Seal Bullet
600466-000	Shaft Seal Bullet
600468-000	Shaft Face Seal Installation Tool
600469-000	Shaft Face Seal Installation Tool
600470-000	Shaft Pressure Seal Installation Tool
600496-000	Shaft Pressure Seal Installation Tool
600523-000	Shaft Pressure Seal Installation Tool
600633-000	Shaft Seal Bullet
600636-000	Bearing Removal Tool
600637-000	Bearing Press Tool
600642-000	Seal Press Tool
64489-000	5/16 in. - 6 Point (E10 Torx Drive) Socket

Special Tools for Char-Lynn Products

Part Number	Special Tool Description
	“A” Series Motors
5422-000	5/16 in. -12 Point Socket Heavy Duty 500 in. lb. [56] Nm. Capacity (001 thru 003) Motors
64489-000	5/16 in. - 6 Point (E10 Torx Drive) Socket (002 and 003) Mtrs.
600470-000	Shaft Pressure Seal Installation Tool (001) Motor
600523-000	Shaft Pressure Seal Installation Tool (002 and 003) Motors
600466-000	Shaft Seal Bullet for 7/8 in. Shaft (001 thru 003) Motors
600304-000	Shaft Seal Bullet for 1 in. Shaft (001 thru 003) Motors
	“H” Series Motors
5422-000	5/16 in. -12 Point Socket Heavy Duty 500 in. lb. [56] Nm. Capacity (007 thru 009) Motors
64489-000	5/16 in. - 6 Point (E10 Torx Drive) Socket (009) Motor
600470-000	Shaft Pressure Seal Installation Tool (007) Motor
600523-000	Shaft Pressure Seal Installation Tool (008 and 009) Motors
600466-000	Shaft Seal Bullet for 7/8 in. Shaft (007 thru 009) Motors
600304-000	Shaft Seal Bullet for 1 in. Shaft (007 thru 009) Motors
	“R” Series Motors
5422-000	5/16 in. -12 Point Socket Heavy Duty 500 in. lb. [56] Nm. Capacity (001) Motor
64489-000	5/16 in. - 6 Point (E10 Torx Drive) Socket (001 and 002) Mtrs.
600523-000	Shaft Pressure Seal Installation Tool (001 and 002) Motors
600466-000	Shaft Seal Bullet for 7/8 in. Shaft (001 and 002) Motors
600304-000	Shaft Seal Bullet for 1 in. Shaft (001 and 002) Motors
	“S” Series Motors
5422-000	5/16 in. -12 Point Socket Heavy Duty 500 in. lb. [56] Nm. Capacity (007 thru 010) Motors
64489-000	5/16 in. - 6 Point (E10 Trox Drive) Socket (010) Motor
600470-000	Shaft Pressure Seal Installation Tool (007 and 008) Motors
600523-000	Shaft Pressure Seal Installation Tool (009 thru 010) Motors
600466-000	Shaft Seal Bullet for 7/8 in. Shaft (007 thru 010) Motors
600304-000	Shaft Seal Bullet for 1 in. Shaft (007 thru 010) Motors

Special Tools for Char-Lynn Products

Part Number	Special Tool Description
<p>64489-000 600523-000 600466-000 600304-000</p>	<p>“T” Series Motors 5/16 in. - 6 Point (E10 Trox Drive) Socket (001 and 002) Mtrs. Shaft Pressure Seal Installation Tool (001 and 002) Motors Shaft Seal Bullet for 7/8 in. Shaft (001 and 002) Motors Shaft Seal Bullet for 1 in. Shaft (001 and 002) Motors</p>
<p>600633-000 600636-000 600637-000 600642-000</p>	<p>“W” Series Motors Shaft Seal Bullet (002) Motor Bearing Removal Tool (002) Motor Bearing Press Tool (002) Motor Seal Press Tool (002) Motor</p>
<p>600496-000 600465-000</p>	<p>2000 Series Motors Shaft Pressure Seal Installation Tool (003 thru 006) Motors Shaft Seal Bullet for 1 in. Shaft (003 thru 006) Motors</p>
<p>600468-000 600421-000 600463-000</p>	<p>4000 Series Motors Shaft Face Seal Installation Tool (004) Motor Shaft Face Seal Installation Tool (006) Motor Shaft Seal Bullet for 1–1/4 in. Shaft (004) Motor</p>
<p>600469-000 600464-000</p>	<p>6000 Series Motors Shaft Face Seal Installation Tool (005 and 006) Motors Shaft Seal Bullet for 1–1/2 in. Shaft (005 and 006) Motors</p>
<p>5422-000 64489-000</p>	<p>10,000 Series Motors 5/16 in. -12 Point Socket Heavy Duty 500 in. lb. [56] Nm. Capacity (002 and 003) Motors 5/16 in. - 6 Point (E10 Torx Drive) Socket (003) Motor</p>

Special Tools for Char-Lynn Products

Part Number	Special Tool Description
	<p>Torque Generator</p>
5422-000	5/16 in. -12 Point Heavy Duty Socket 500 in lb. [56 Nm] Capacity (001 and 006) Torque Generators
64489-000	5/16 in. - 6 Point (E 10 Torx Drive) Socket (002) Torque Generator
600057-000	Spring Installation Tool (001, 002, and 006) Torque Generators
	<p>3, 4, 6, and 12 Series SCU</p>
5422-000	5/16 in. -12 Point Heavy Duty Socket 500 in lb. [56 Nm] Capacity (001) SCU
64489-000	5/16 in. - 6 Point (E 10 Torx Drive) Socket (002) SCU
600057-000	Spring Installation Tool (001 and 002) SCU
	<p>110, 230, and 450 Series SCU</p>
5422-000	5/16 in. -12 Point Heavy Duty Socket 500 in lb. [56 Nm] Capacity (001) SCU
64489-000	5/16 in. - 6 Point (E 10 Torx Drive) Socket (002) SCU
600057-000	Spring Installation Tool (001 and 002) SCU
	<p>20 Series SCU</p>
600604-000	Spool/Sleeve Installation Tool (001) SCU
	<p>25, 35, and 40 Series SCU</p>
600336-000	Spring Installation Tool (001 Thru 003) SCU

Eaton
Fluid Power Group
Hydraulics Business USA
14615 Lone Oak Road
Eden Prairie, MN 55344
USA
Tel: 952-937-9800
Fax: 952-294-7722
www.eaton.com/hydraulics

Eaton
Fluid Power Group
Hydraulics Business Europe
Route de la Longeraie 7
1110 Morges
Switzerland
Tel: +41 (0) 21 811 4600
Fax: +41 (0) 21 811 4601

Eaton
Fluid Power Group
Hydraulics Business Asia Pacific
11th Floor Hong Kong New World Tower
300 Huaihai Zhong Road
Shanghai 200021
China
Tel: 86-21-6387-9988
Fax: 86-21-6335-3912