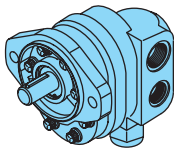




Systems Supplier

Lift Trucks

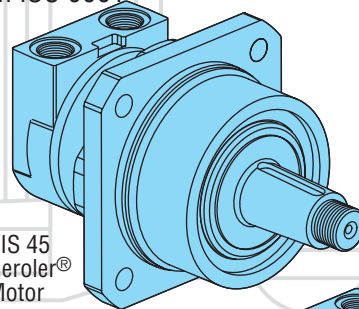
- Experienced system design engineers** - System-based solutions to all your hydraulic needs.
- Global manufacturing capability** - Manufacturing plants and joint ventures in the U.S., Europe, Japan and China.
- Global sales support** - Sales offices in U.S., Scotland, Germany, Singapore, China and Korea.
- World's largest distributor network** - Over 100 distributors in 50 different countries.
- Reliable, robust products** - Field-proven leader in the hydraulics industry.
- Exceptional product quality** - All products manufactured in ISO 9001-certified sites.



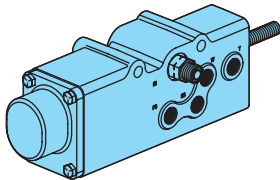
Series 26 Load Sensing Gear Pump



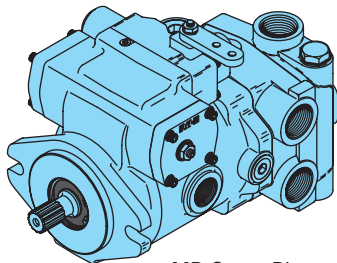
Flex 4 Steering Control Unit



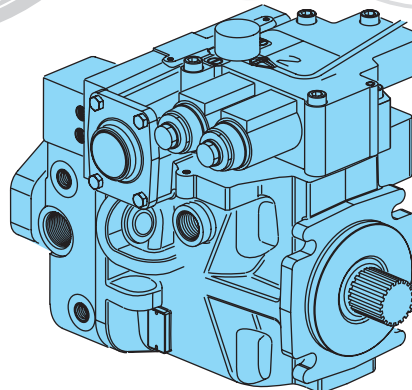
VIS 45 Geroler[®] Motor



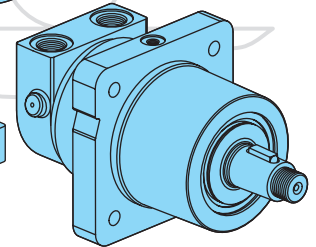
Brake Valve



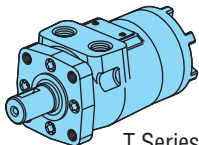
MD Servo Piston Pump 72400



HD Series 2 Piston Pump

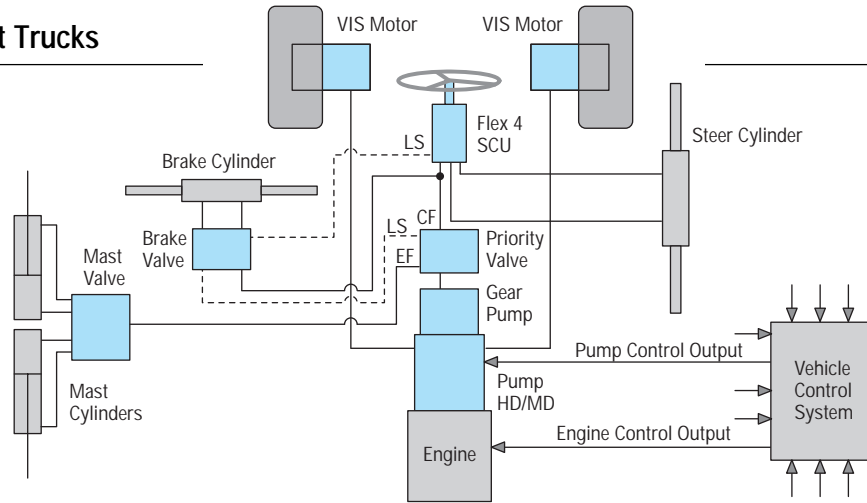


VIS 30 Geroler[®] Motor



T Series Geroler[®] Motor

IC Trucks
Hydrostatic Propel



Propel Circuit

Hydrostatic Propel Pump — Series 2 HD pump or 72400 Series MD pump

- Compact cradle design
- Noise reduced housings and valve plates
- Full range of auxiliary mounting pad options for work circuit pumps
- Wide range of charge pump displacements to meet the needs of a variety of circuits
- Pressure ratings (HD = 430 bar [6250 PSI] MD = 350 bar [5050 PSI])
- ADC – Automotive Drive Control with Inching and Anti-Stall options

NEW

Hydrostatic Propel Motor (Orbit motors and/or Axial Piston motors)

Orbit Motors - VIS - Valve in Star

- Very compact package
- Improved efficiency
- Quiet and smooth operation
- Available with bearing and brake package

Axial Piston Motors

- High speed capabilities
- High efficiency
- Thru shaft capability
- Available as fixed and variable motors
- Integral shuttle valves (for loop flushing)

NEW

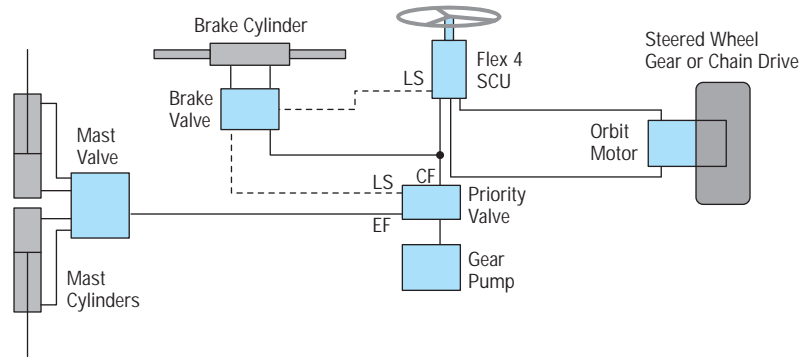
Vehicle Control System

Eaton is now offering a programmable Digital Controller with application dedicated software controlling the following functions:

- Travel speed input
- Automotive drive control with adjustable acceleration and deceleration rates
- Turn angle input
- Swashplate angle feedback
- Engine rpm
- Signal to speed up the engine for mast lift control
- Tip-over control along with vehicle speed and turn angle

NEW

Electric Trucks Three Wheel Drive



Steering Circuit

Flex 4 Steering Control Unit — highly flexible design with a variety of valve options and port, mounting, and column configurations

Port Configuration		Mounting Configuration		Column Interface	
End-Ports	Side-Ports	Top-Mount	Rear-Mount	Integral (Short)	External (Any Length)*

*Tilt Column Available

Motion Sensor — Quadrature Motion Detection Circuit (see Electric Trucks – Four Wheel (page 4))

NEW

- Determines steering wheel position, rpm and direction
- Determines steering wheel motion for on-demand control of pump
- Signal is used either to reduce pump speed or to shut off pump motor to save energy

Priority Valves — In-line and bolt on valves are offered

Load Sense Gear Pump — Series 26

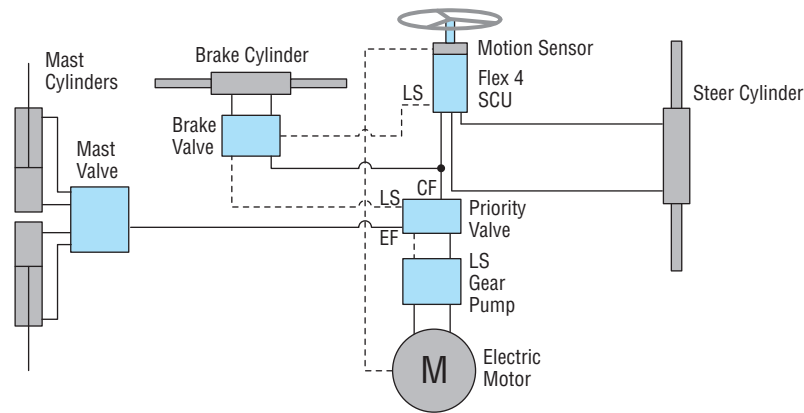
NEW

- 13 different displacements
- Integral priority valve
- Quiet operation
- Improved efficiency

Orbit Motor — T Series

- Low speed/low leakage valving

Electric Trucks Four Wheel



Work Circuit

Load Sensing Brake Valve — make power brakes an economical and efficient feature on lift trucks

NEW

- No dedicated pressure source needed
- Compact package
- Two stage master cylinder with built in reservoir provides dead engine braking
- Lower input efforts and reduced pedal travel for braking

Information contained in this catalog is accurate as of the publication date and is subject to change without notice. Performance values are typical values. Customers are responsible for selecting products for their applications using normal engineering methods.

Eaton
Fluid Power Group
Hydraulics Business USA
14615 Lone Oak Road
Eden Prairie, MN 55344
USA
Tel: 952-937-9800
Fax: 952-294-7722
www.eaton.com/hydraulics

Eaton
Fluid Power Group
Hydraulics Business Europe
Route de la Longeraie 7
1110 Morges
Switzerland
Tel: +41 (0) 21 811 4600
Fax: +41 (0) 21 811 4601

Eaton
Fluid Power Group
Hydraulics Business Asia Pacific
11th Floor Hong Kong New World Tower
300 Huaihai Zhong Road
Shanghai 200021
China
Tel: 86-21-6387-9988
Fax: 86-21-6335-3912